



BEYOND MUD PUMP CATALOGUE

Shandong Beyond Petroleum Equipment Co., Ltd

[Http:// www.sdbeyondpetro.com](http://www.sdbeyondpetro.com)

Email: sales@sdbeyondpetro.com



ABOUT BEYOND

- **Full Name:** Shandong Beyond Petroleum Equipment Co., Ltd.
- **Establishment:** December, 2016;
- **Main Business:** To offer the best solutions for the overseas customers on drilling equipment, spares and services for different drilling application like petroleum, geothermal, water well, HDD and construction foundation etc.
- **Main Products Coverage:** China-make drilling & workover rigs, mud pumps, solid control system & equipment, wellhead and downhole tools, drilling tools, OCTG and other related equipment and parts in all type of drilling and well completion activities.
- **Extra:** Technical services, personnel training and maintenance guide towards China-made drilling rigs.





BEYOND KEY PRODUCT: MUD PUMP & SPARES

- Quality API certified mud pump (duplex or triplex, plunger or piston) based on customer requirement for the discharge pressure and volume.
- To assemble the mud pump with different brand of power (diesel or electric) and transmission at customer's requirement.
- To supply the customer with full range of mud pump parts like cylinders, liners, pistons and valves etc.

REASONS TO CHOOSE BYOND AS MUD PUMP SUPPLIER

- **Technical Support and Production Ability:** 1) most professional technicians with good experience in mud pump; 2) tens of highly skilled workers working on the pump parts manufacturing and pump assembling; 3) production ability site-audited by supervising inspectorate like France BV and SGS-CSTC.
- **Quality Assurance:** 1) professional inspectors perform strict quality inspection from start to the end; 2) Each part assembled on the pump will be well tested and highly qualified; 3) Onload running test for at least 8 hours; 4) One (1) year quality guarantee for each pump.;
- **Competitive Price:** As one private company, we can offer most competitive price with assured quality.
- **Fast Delivery:** Usually some pump model in stock to make fast delivery for clients with urgent need. For pump without stock, delivery within 40 days.



SELECTION FACTORS OF MUD PUMPS

- Types: 1) Duplex double-action pump VS Triplex Single-action Pump; 2) Plunger Pump VS Piston Pump;
- Selection Factor: Discharge Flowrate & Pressure;
- Discharge Capacity: 4L/s to 77L/S;
- Discharge Pressure: 2.5Mpa to 50Mpa;
- Power range: 250HP to 2200HP;
- Power Option: Electric Motor VS Diesel Engine Driven;
- Transmission Option @ Diesel drive: 1) Diesel Engine + Air Clutch + Gear Box+ Belt Pulley +V-belts +pump; 2) Diesel Engine + Cardan Shaft + hydraulic coupler + cardan shaft + pump; 3) Diesel Engine + hydraulic torque converter + cardan shaft + pump; 4) Diesel Engine + Reastar Gear Box + cardan shaft + pump;
- Transmission Option @ Electric Motor: Belt VS Chains;

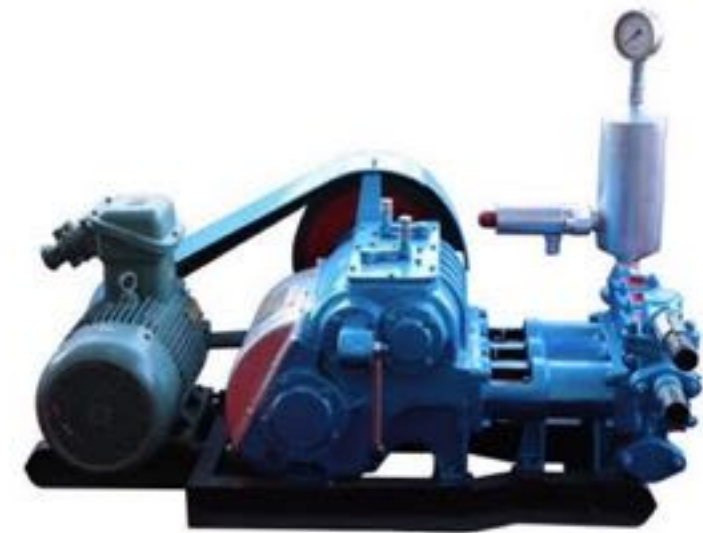


**PLEASE CHOOSE THE PUMP MODEL
BASED ON YOUR EXPECTED DISCHARGE
FLOWRATE AND THE PRESSURE FROM
BELOW FORMS**



BW-250/6 TRIPLEX SINGLE-ACTION PISTON PUMP

Type	Horizontal triplex reciprocating single-acting piston pump			
Length stock(mm)	100			
Diameter cylinder(mm)	80			
Speed of pump (min ⁻¹)	200	116	72	42
Displacement (LPM)	250	145	90	52
Pressure (Mpa)	2.5	4.5	6.0	6.0
Volume rate (%)	85			
Total efficiency (%)	72			
Motor power (Kw)	15			
Triangle pulley wheel diameter (mm)	B type; 5-slot; 410mm			
Input speed (r/min)	500			
Maximum water absorption height (m)	2.5			
Inlet pipe diameter (mm)	3"			
Discharge pipe diameter (mm)	2"			
Dimensions: length X width X height (mm)	1100X995X650			
Weight (Kg)	500			
Dimensions with motor(mm)	1600x995x650			
Weight with motor(Kg)	650			



BW-1500/12 FOUR-CYLINDER SINGLE-ACTION PISTON PUMP

Model: BW-1500/12 ;

Type: Four-cylinder single action piston pump;

Cylinder Dia.:153mm;

Stroke Length: 150mm;

1500L/min@8Mpa@136SPM;

1080L/min@12Mpa@98SPM;

Power : 185KW ;

Dimension: 1800*1400*1500mm;

Weight: 2450Kg



BW-1200/7 FOUR-CYLINDER SINGLE-ACTION PISTON PUMP

Model: BW-1200/7;

Type: Four-cylinder single action piston pump;

Pump Speed: 70SPM;

Stroke Length: 270mm;

1200L/min@7Mpa@160mm Liner;

1000L/min@8Mpa@150mm Liner;

Power : 185KW ;

Dimension: 3045*1440*2420mm;

Weight(kg): 7200kg;



3NB-350 TRIPLEX SINGLE-ACTION PISTON PUMP

(NON-API STANDARD, SPARES ONLY AVAILABLE FROM CHINA)

Power Rating, hp(kw)	350 (257)
Stroke Rating, (SPM)	130
Stroke Length, (mm)	180
Inlet Size (mm)	203
Discharge Size (mm)	101
Valve	5#
Liner (mm)	φ90--φ160
Overall Dimensions. (L*W*H) (mm)	3600*2080*2015
Approx. Weight (kg)	8058



SPM	Liner size (mm) and Pressure Rating(Mpa)							
	φ90	φ100	φ110	φ120	φ130	φ140	φ150	φ160
	31	25	20.8	17.5	14.9	12.8	11.2	9.8
Displacement (L/S)								
130	7.44	9.18	11.11	13.23	15.52	18.00	20.67	23.51
120	6.87	8.48	10.26	12.21	14.33	16.62	19.08	21.70
110	6.29	7.77	9.40	11.19	13.13	15.23	17.49	19.90
100	5.72	7.07	8.55	10.17	11.94	13.85	15.90	18.09

Based on 100% volumetric efficiency and 90% mechanical efficiency



F-500 TRIPLEX SINGLE-ACTION PISTON PUMP

(API STANDARD, SPARES INTERNATIONALLY COMPATIBLE)

Type			Horizontal Triplex Single Acting Piston Pump			Gear Type		Herringbone Gear	
Rated Input Power (KW/HP)			373/500			Gear Ratio		4.286 : 1	
Rated Stroke (SPM)			165			Lubrication		Forced & Splashing	
Stroke Length (mm/in)			190.5/7.5 "			Valve Cavity		API-5#	
Inlet Connection			8 " (203mm)			Outlet Connection		4 " Flange 5000psi	
Weight (Kg/Pound)			9770/21540			Overall Dimension (L×W×H)		3658×2709×2231mm 144 " ×106.65 " ×87.8 "	
SPM	Rated Power		Liner Dia. (in) and Pressure Rating (Mpa / psi)						
	HP	KW	6-3/4	6-1/2	6	5-1/2	5	4-1/2	4
			9.25 1340	9.97 1445	11.7 1695	13.93 2020	16.85 2445	20.81 3020	26.33 3820
Displacement (L/S)/(gpm)									
165	500	373	36.28 575	33.65 533	28.67 454	24.09 382	19.91 316	16.13 256	12.74 202
150	455	339	32.99 523	30.59 485	26.06 413	21.90 347	18.10 287	14.66 232	11.58 184
140	424	316	30.79 488	28.55 453	24.32 385	20.44 324	16.89 268	13.68 217	10.81 171
130	394	294	28.59 453	26.51 420	22.59 358	18.98 301	15.69 249	12.71 201	10.04 159
120	364	271	26.39 418	24.47 388	20.85 330	17.52 278	14.48 230	11.73 186	9.27 147
110	333	249	24.19 383	22.43 356	19.11 303	16.06 255	13.27 210	10.75 170	8.49 135
Based on 100% volumetric efficiency and 90% mechanical efficiency									



F-500 COMPLETE WITH:

- A -Three interchangeable forged steel one piece cylinder.
- B -Threaded valve pot covers and cylinder heads.
- C -Valve pot according to API # 5
- D -Discharge manifold C/W two 4" -5000 PSI- API flanged outlets.
- E -Suction manifold C/W two flanged ends.
- F -Discharge pulsation dampener 5000 PSI W.P C/W all accessories.
- G -Lubrication: two kinds: one is inside gear pump driven by big gear wheel in the power end; the other is separate electric lubrication oil pump, which is driven separately by electric motor outside the power end.
- H -Pinion belt driven liner wash pump ASSY C/W all required accessories
- I -Relief valve (shear PIN type) 1500-5000 PSI W.P.
- J -Pressure gauge 0-5000 PSI.

F-800 TRIPLEX SINGLE-ACTION PISTON PUMP

(API STANDARD, SPARES INTERNATIONALLY COMPATIBLE)

Type			Horizontal Triplex Single Acting Piston Pump				Gear Type		Herringbone Gear		
Rated Input Power (KW/HP)			597/800				Gear Ratio		4.185 : 1		
Rated Stroke (SPM)			150				Lubrication		Forced & Splashing		
Stroke Length (mm/in)			228.6/9 "				Valve Cavity		API-6#		
Inlet Connection			10 " (254mm)				Outlet Connection		5 1/8 " Flange 5000PSI		
Weight (Kg/Pound)			14500/31970				Overall Dimension (L×W×H)		3963×3025×2410mm 156 " ×119 " ×95 "		
SPM	Rated Power		Liner Dia.(in) and Pressure Rating (Mpa)/(psi)								
	HP	KW	6-3/4	6-1/2	6-1/4	6	5-1/2	5	4-1/2	4	
			13.56	14.63	15.82	17.16	20.43	24.72	30.51	35	
			1965	2120	2295	2490	2965	3585	4425	5075	
			Displacement (L/S)/(gpm)								
150	800	597	39.58	36.70	33.94	31.27	26.28	21.72	17.59	13.90	
			627	582	538	496	417	344	279	220	
140	747	557	36.94	34.26	31.67	29.19	24.53	20.27	16.42	12.97	
			586	543	502	463	389	321	260	206	
130	693	517	34.30	31.81	29.41	27.10	22.78	18.82	15.25	12.05	
			544	504	466	430	361	298	242	191	
120	640	477	31.67	29.36	27.15	25.02	21.02	17.37	14.07	11.12	
			502	465	430	397	333	275	223	176	
110	587	438	29.03	26.92	24.89	22.93	19.27	15.93	12.90	10.19	
			460	427	395	363	305	252	204	162	
Based on 100% volumetric efficiency and 90% mechanical efficiency											



F-1000 TRIPLEX SINGLE-ACTION PISTON PUMP

(API STANDARD, SPARES INTERNATIONALLY COMPATIBLE)

Type			Horizontal Triplex Single Acting Piston Pump			Gear Type			Herringbone Gear	
Rated Input Power (KW/HP)			746/1000			Gear Ratio			4.207 : 1	
Rated Stroke (SPM)			140			Lubrication			Forced & Splashing	
Stroke Length (mm/in)			254/10 "			Valve Cavity			API-6#	
Inlet Connection			12 " (305mm)			Outlet Connection			5 1/8 " Flange 5000PSI	
Weight (Kg/Pound)			18790/41425			Overall Dimension (L×W×H)			4267×3167×2580mm 168 " ×124.7 " ×101.6 "	
SPM	Rated Power		Liner Dia. (in) and Pressure Rating (Mpa / psi)							
	HP	KW	6-3/4	6-1/2	6-1/4	6	5-1/2	5	4-1/2	4
			16.35 2370	17.63 2555	19.07 2765	20.69 3000	24.62 3570	29.79 4320	35 5075	35 5075
Displacement (L/S)/(gpm)										
140	1000	746	41.05 651	38.06 603	35.19 558	32.43 514	27.25 432	22.52 357	18.24 289	14.41 228
130	929	692	38.12 604.2	35.35 560	32.68 518	30.12 477	25.31 401	20.91 331	16.94 269	13.39 212
120	857	639	35.18 558	32.63 517	30.16 478	27.80 441	23.36 370	19.31 306	15.64 248	12.36 196
110	786	596	32.25 511	29.91 474	27.65 438	25.48 404	21.41 339	17.70 281	14.33 227	11.33 180
100	714	533	29.32 465	27.19 431	25.14 398	23.17 367	19.47 309	16.09 255	13.03 207	10.30 163
Based on 100% volumetric efficiency and 90% mechanical efficiency										



F-800/1000 COMPLETE WITH:

- A -Three interchangeable forged steel one piece fluid end.
- B -Threaded valve pot covers and cylinder heads.
- C -Valve pot according to API # 6
- D -Discharge manifold C/W two 5 1/8" -5000 PSI- API flanged outlets.
- E -Suction manifold C/W two flanged ends.
- F -Discharge pulsation dampener 5000 PSI W.P C/W all accessories.
- G -Lubrication system : oil circulating pump installation (electrical driven, China-made) , with fresh water heat exchanger (oil cooling) , Magnetic oil filter , Cartridge type gauge.
- H -Liner flushing system consisting of:
 - One independent pump electrical driven by a 3HP electric motor. (China-made)
- I -Relief valve (JA-3 shear PIN type) 1500-5000 PSI W.P to ac ng tank.
- J -Pressure gauge 0-5000 PSI.



F-1300 TRIPLEX SINGLE-ACTION PISTON PUMP

(API STANDARD, SPARES INTERNATIONALLY COMPATIBLE)

Type			Horizontal Triplex Single Acting Piston Pump		Gear Type		Herringbone Gear	
Rated (KW/HP)	Input	Power	969/1300		Gear Ratio		4.206 : 1	
Rated Stroke (SPM)			120		Lubrication		Forced & Splashing	
Stroke Length (mm/in)			305/12 "		Valve Cavity		API-7#	
Inlet Connection			12 " (305mm)		Outlet Connection		5 1/8 " Flange 5000PSI	
Weight (Kg/Pound)			24572/54170		Overall Dimension (L x W x H)		4615×3276×2688mm 181.8 " × 128 " × 102.4 "	
SPM	Rated Power		Liner Dia.(in) and Pressure Rating (Mpa / psi)					
	HP	KW	7	6-3/4	6-1/4	6	5-1/2	5
			19.17 2780	20.65 2994	24.07 3490	26.16 3793	31.13 4539	35 5075
Displacement (L/S)/(gpm)								
120	1300	969	45.41 720	42.23 669	36.20 574	33.36 529	28.04 444	23.17 367
110	1192	883	41.63 660	38.71 614	33.19 526	30.58 485	25.70 407	21.24 337
100	1083	803	37.84 600	35.19 558	30.17 478	27.80 441	23.36 370	19.31 306
90	975	727	34.06 540	31.67 502	27.15 430	25.02 397	21.03 333	17.38 275
Based on 100% volumetric efficiency and 90% mechanical efficiency								



F-1600 TRIPLEX SINGLE-ACTION PISTON PUMP

(API STANDARD, SPARES INTERNATIONALLY COMPATIBLE)

Type			Horizontal Triplex Single Acting Piston Pump		Gear Type		Herringbone Gear	
Rated Input Power (KW/HP)			1193/1600		Gear Ratio		4.206 : 1	
Rated Stroke (SPM)			120		Lubrication		Forced & Splashing	
Stroke Length (mm/in)			305/12 "		Valve Cavity		API-7#	
Inlet Connection			12 " (305mm)		Outlet Connection		5 1/8 " Flange 5000PSI	
Weight (Kg/Pound)			24791/54660		Overall Dimension (L×W×H)		4615×3276×2688mm 181.8 " ×128 " ×102.4 "	
SPM	Rated Power		Liner Dia. (in) and Pressure Rating (Mpa / psi)					
	HP	KW	7	6-3/4	6-1/4	6	5-1/2	5
			24.19	25.46	29.66	32.16	34.5	35
			3508	3692	4300	4663	5000	5075
			Displacement (L/S)/(gpm)					
120	1600	1193	45.41	42.23	36.20	33.36	28.04	23.17
			720	669	574	529	444	367
110	1467	1094	41.63	38.71	33.19	30.58	25.70	21.24
			660	614	526	485	407	337
100	1333	994	37.84	35.19	30.17	27.80	23.36	19.31
			600	558	478	441	370	306
90	1200	895	34.06	31.67	27.15	25.02	21.03	17.38
			540	502	430	397	333	275



Based on 100% volumetric efficiency and 90% mechanical efficiency



F-1300/1600 COMPLETE WITH:

- equipped with pistons and liners of 6 ¾ inch;
- Pulse dampener, KB-75 type, fully equipped with connection flange, gauge, nitrogen charging device, etc.
- JA-3 shear relief valve with key
- Discharge manifold, suction manifold and connections, etc.
- Greasing system, splashing & forced greasing; with the gear oil pump for greasing the gears, bearings, crosshead, guiding plates, and extension rod etc.
- Pinion belt driven liner wash pump ASSY C/W all required accessories (wash pump, belt guard, hoses, recirculation tank) for cooling the liners' pistons (there is electric spraying pump as alternative)
- Jib crane with hand hoist and trolley, to handle different weights
- Equipped with pump pressure gauges
- **Technical documentation, including:**
 - - maintenance and operating manual; hydrostatic test report; report with pump parameters (flow, pressure, spm), obtained within the unit; materials test report; certificate of quality;



F-2200 TRIPLEX SINGLE-ACTION PISTON PUMP

(API STANDARD, SPARES INTERNATIONALLY COMPATIBLE)

Model	Type		Power Rating		Stroke Rating		Stroke Length		Gear Ratio	
F-2200	Triplex single-acting piston pump		2200HP (1618KW)		105SPM		356mm		3.512	
Drive Wheel Rated Speed (r/min)	Dia. Of Suction Manifold		Dia. Of Suction Manifold		Liner Range		Overall Size(mm)		Total Weight(Kg)	
368.76	305mm		130mm		140-230mm		6000*3465*2745		38800	
Stroke per minute	Liner size (mm) and Pressure Rating(Mpa)									
	φ140	φ150	φ160	φ170	φ180	φ190	φ200	φ210	φ220	φ230
	35	35	35	35	31	27.9	25.1	22.8	20.8	19
	Displacement (L/S)									
105	28.76	33.01	37.56	42.40	47.54	52.96	58.69	64.70	71.01	77.61
90	24.65	28.30	32.19	36.34	40.75	45.40	50.30	55.46	60.87	66.53
80	21.91	25.15	28.62	32.31	36.22	40.35	44.71	49.30	54.10	59.13
70	19.17	22.01	25.04	28.27	31.69	35.31	39.12	43.13	47.34	51.74
60	16.43	18.86	21.46	24.23	27.16	30.27	33.54	36.97	40.58	44.35
Based on 100% volumetric efficiency and 90% mechanical efficiency										



CY-2000 PUMP SPECIALLY DESIGNED FOR HDD DRILLING

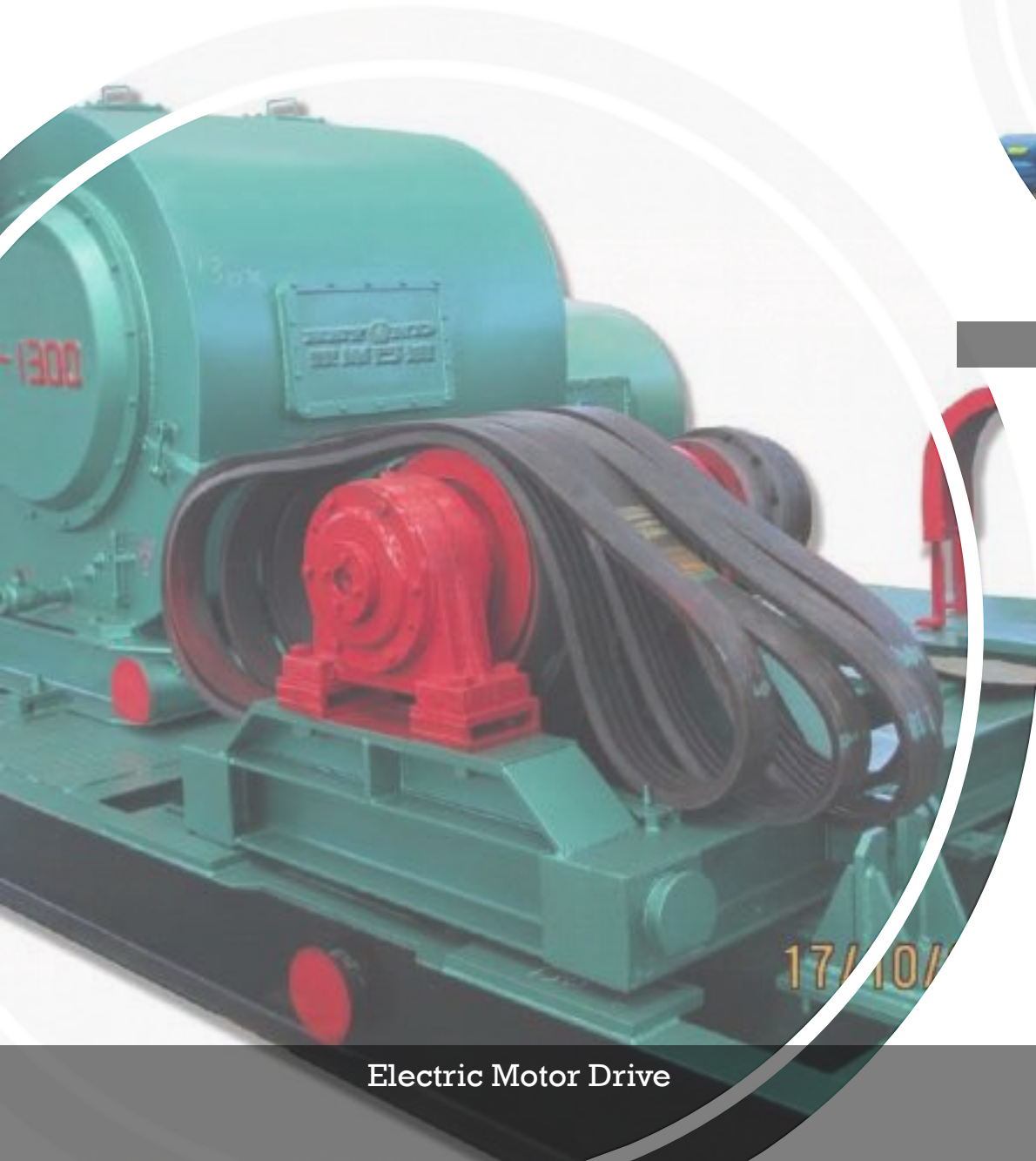
Type		Horizontal three-cylinders single-acting piston pump		Rated input power		185KW (251hp)	
Rated SPM		130 Stroke/min		Rated displacement		2013L/min	
Stroke length		230mm		Valve		API 5#	
Suction diameter		8"		Discharge diameter		3"	
Weight		3700kg		Dimensions (LxWxH)		2320x1600x1760(mm)	
SPM	Liner (mm)	180	170	160	150	140	130
	Rated MPa	5	5.6	6.33	7.2	8.26	9.58
	Rated power	Displacement (L/s)					
130	185kw	33.5	29.9	26.5	23.26	20.26	17.5
120	170.7kw	30.9	27.6	24.5	21.5	17.8	16.2
110	156.5kw	28.3	25.3	22.4	19.7	17.1	14.8
100	142.3kw	25.8	23	20.4	17.9	15.6	13.5
Mechanical efficiency is 100%; volumetric efficiency 92%							



MUD PUMP PACKAGE

- We can offer **unitized pump package** according to customer different requirement:
 - For pump power, you can choose either diesel engine (Caterpillar, Cummings, JDEC, or any other brand you like) or electric motor (AC or DC).
 - For transmission system, you can choose mechanical (reducer +air clutch +V belt), hydraulic coupling or hydraulic torque converter.
 - For supercharging system, you can choose either to install it or not. It can help to improve the suction effect.





Electric Motor Drive



Diesel Drive

POWER OPTION:

- Electric Motor VS Diesel Engine Driven



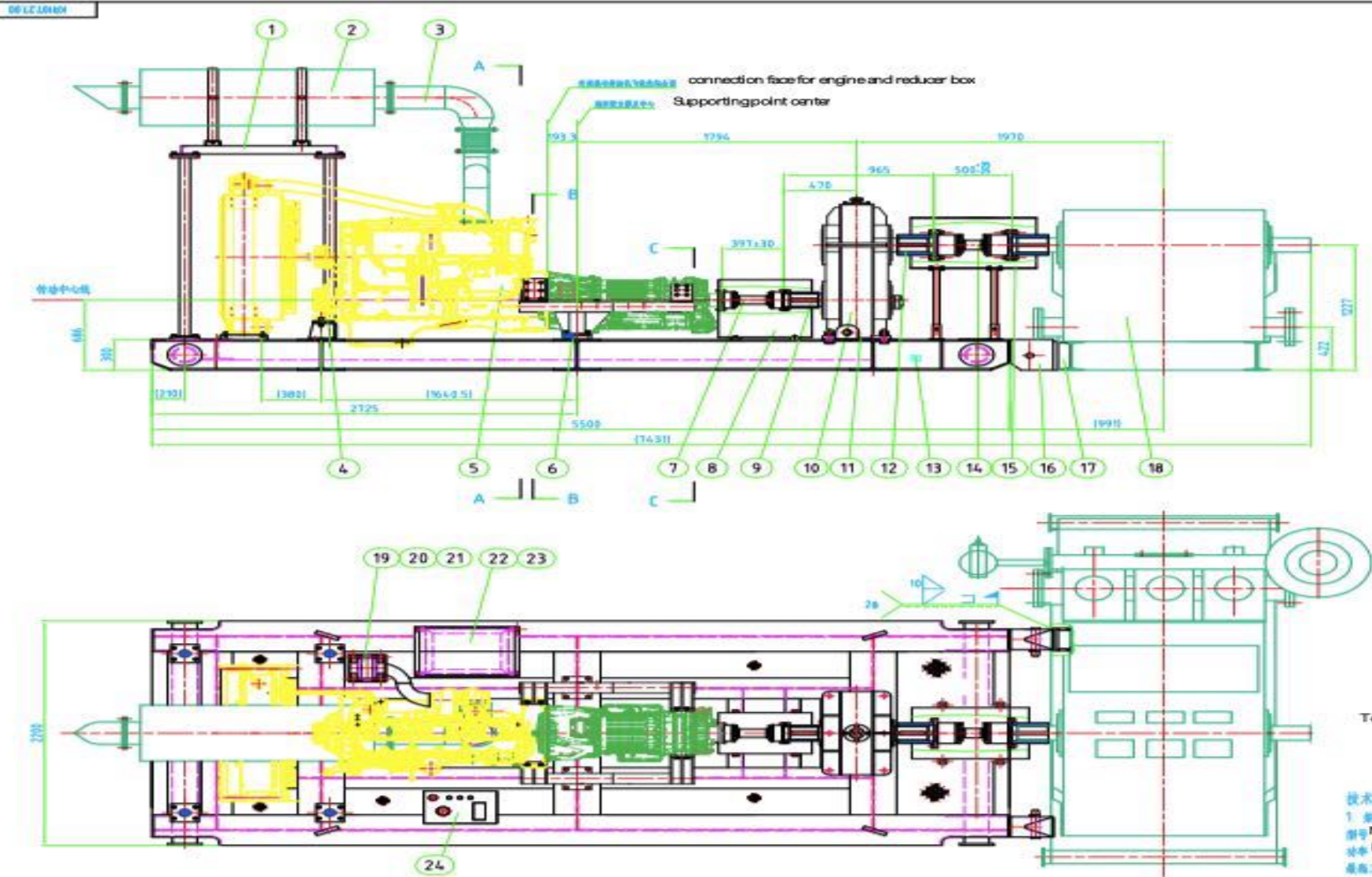
DIFFERENT TRANSMISSION TYPE FOR MUD PUMP

- Transmission Option @ Diesel drive:
 - 1) Diesel Engine + Air Clutch + Gear Box+ Belt Pulley +V-belts +pump;
 - 2) Diesel Engine + Cardan Shaft + hydraulic coupler + cardan shaft + pump;
 - 3) Diesel Engine + hydraulic torque converter + cardan shaft + pump;
 - 4) Diesel Engine + Reastar Gear Box + cardan shaft + pump;

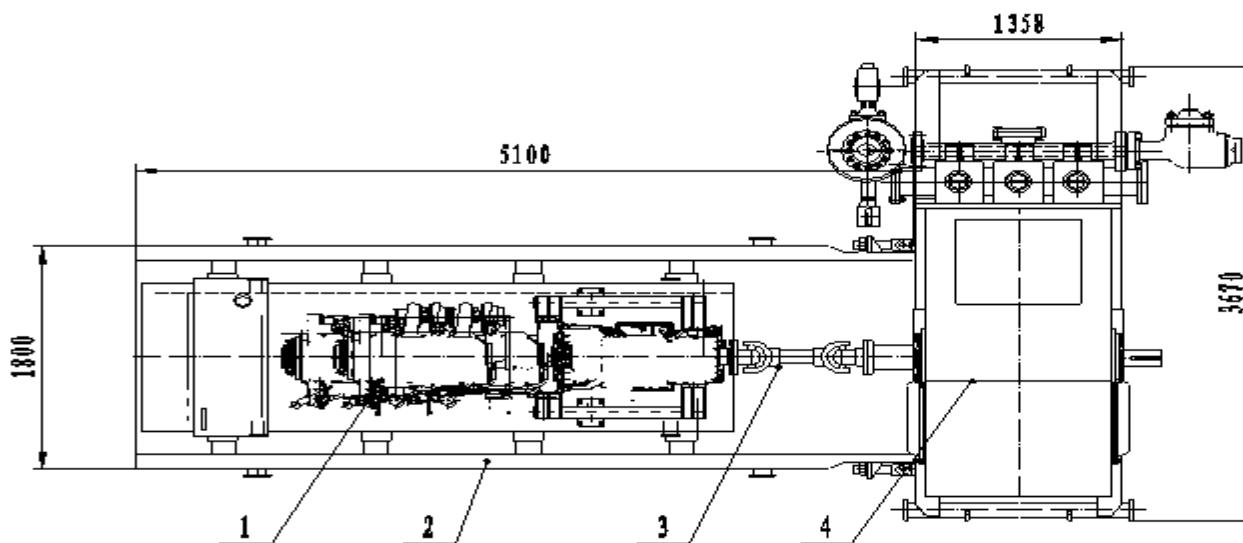
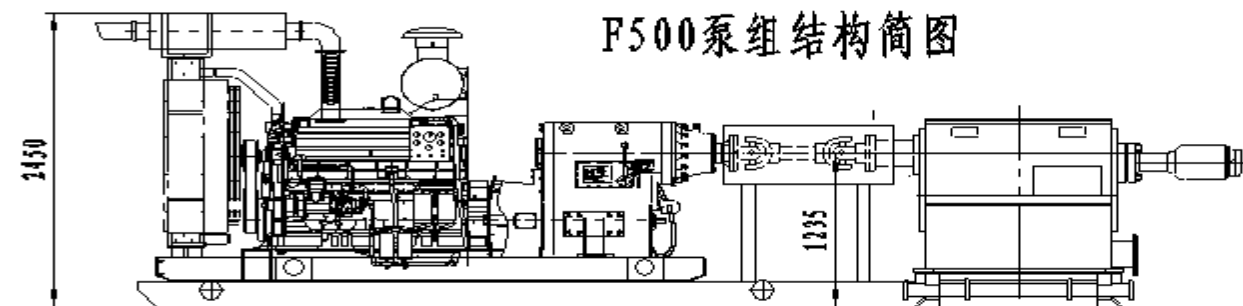
- Transmission Option @ Electric Motor:
 - 1) Belt Pulley + Belts;
 - 2) Chain Wheels + Chain Box + Chains;



DIESEL ENGINE + HYDRAULIC TORQUE CONVERTER + CARDAN SHAFT + PUMP



DIESEL ENGINE + REASTAR GEAR BOX + CARDAN SHAFT + PUMP

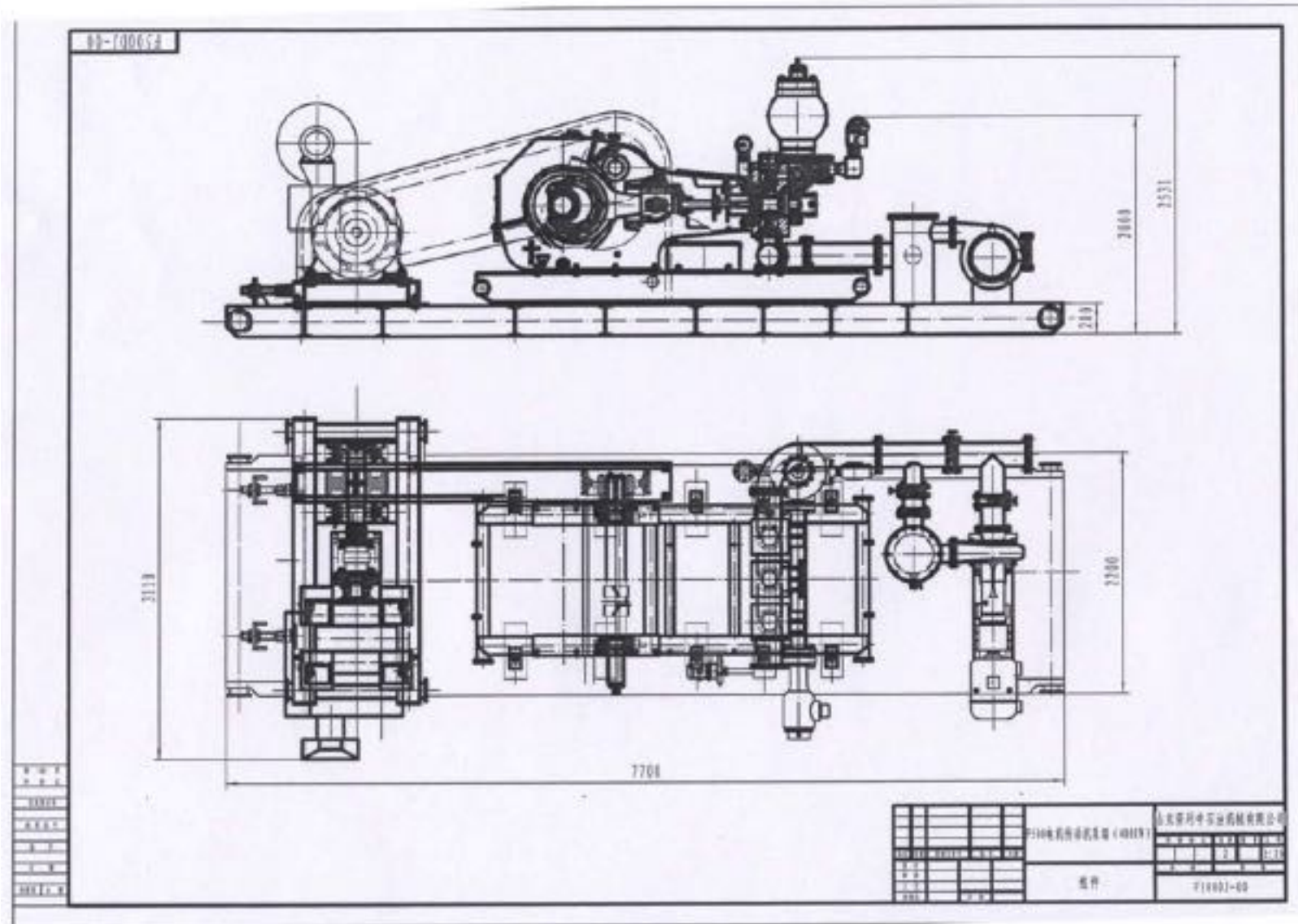


- 1、动力单元总成 康明斯+雷斯塔变速箱
- 2、大底座
- 3、万向轴 SWC285
- 4、泥浆泵 F500

外露旋转部件均配备护罩



ELECTRIC MOTOR + BELT/CHAIN + MUD PUMP

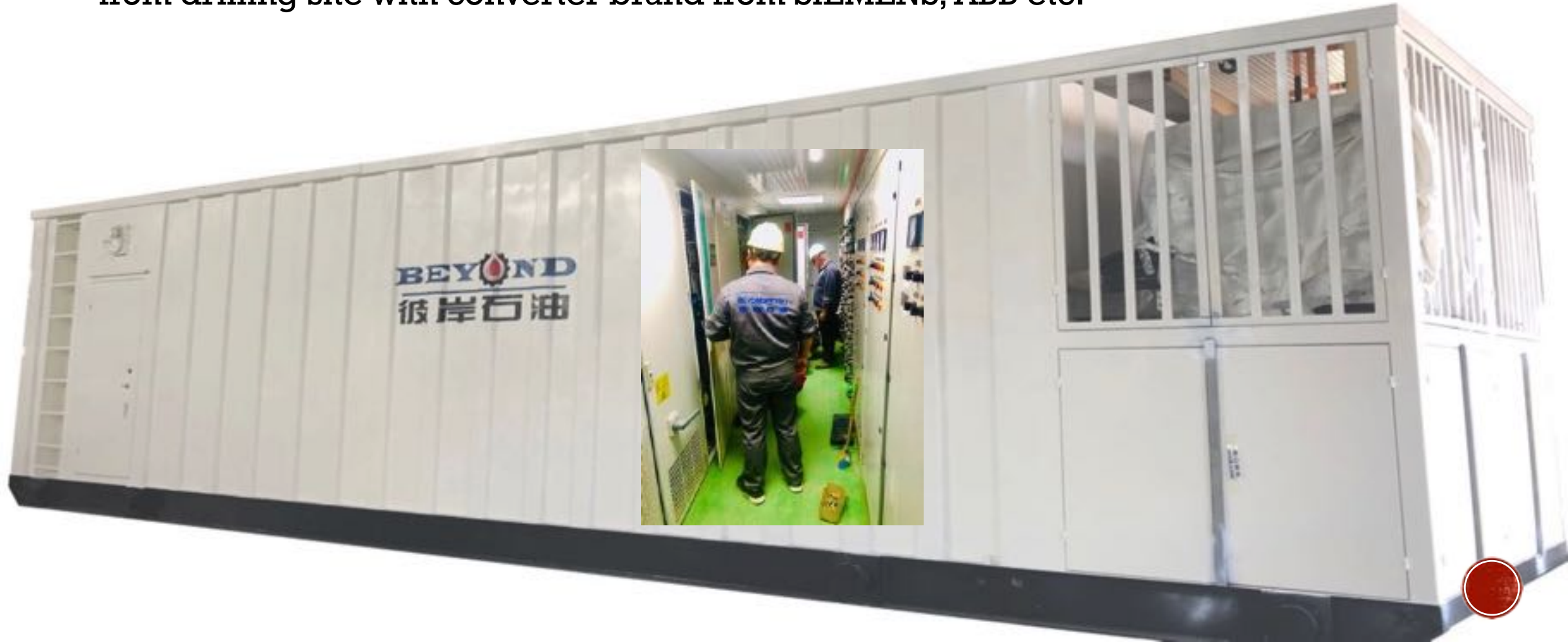


REFERENCE PICTURES



VFD CONTROL HOUSE FOR ELECTRIC PUMP

- We can supply Electric Control System for Electric Mud Pumps and other electrics from drilling site with converter brand from SIEMENS, ABB etc.



MUD PUMP SPARES

WE CAN SUPPLY VARIOUS MUD PUMP SPARES AS PER CUSTOMER REQUEST.





THANKS FOR YOUR TIME!

**LOOKING FORWARD
FOR COOPERATION**

Contact Info:

Email: sales@sdbeyondpetro.com

alex.zhao@sdbeyondpetro.com

Mobile: +86-13475681371 (whatsapp)

Tel/Fax: +86-536-7453856

[Http://www.sdbeyondpetro.com](http://www.sdbeyondpetro.com)

